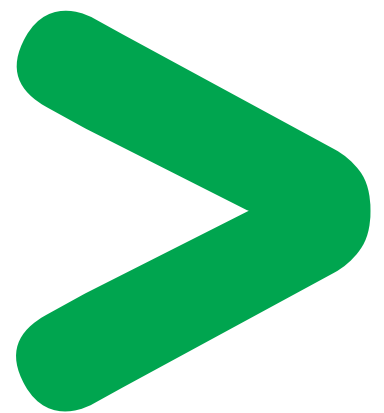
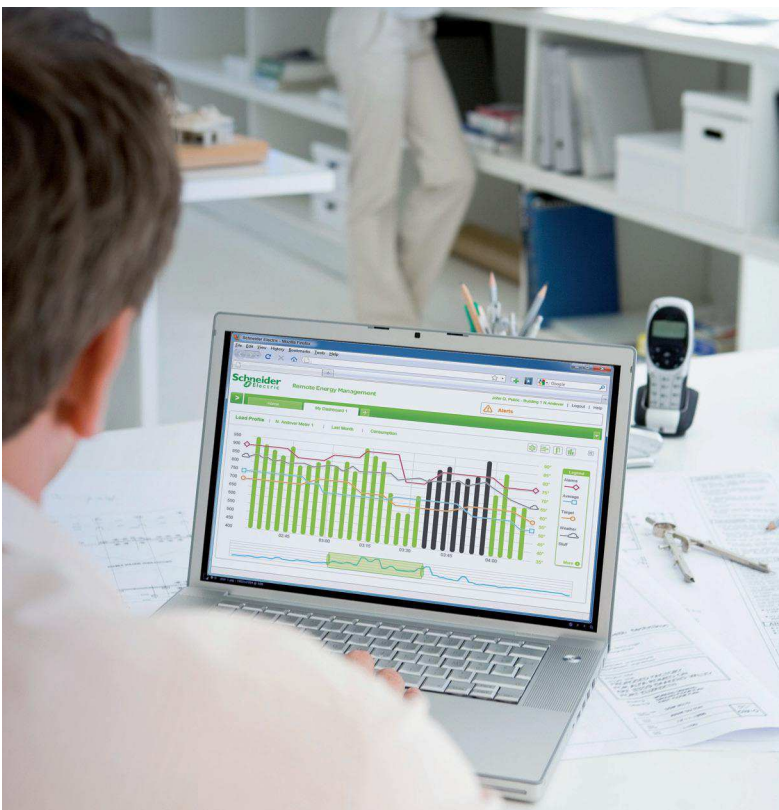


Simple Energy Management Solutions

On-site Energy Management for buildings

User guide
03/2011



The information provided in this documentation contains general descriptions and/or technical characteristics of the performance of the products contained herein. This documentation is not intended as a substitute for and is not to be used for determining suitability or reliability of these products for specific user applications. It is the duty of any such user or integrator to perform the appropriate and complete risk analysis, evaluation and testing of the products with respect to the relevant specific application or use thereof. Neither Schneider Electric nor any of its affiliates or subsidiaries shall be responsible or liable for misuse of the information contained herein. If you have any suggestions for improvements or amendments or have found errors in this publication, please notify us.

No part of this document may be reproduced in any form or by any means, electronic or mechanical, including photocopying, without express written permission of Schneider Electric.

All pertinent state, regional, and local safety regulations must be observed when installing and using this product. For reasons of safety and to help ensure compliance with documented system data, only the manufacturer should perform repairs to components.

When devices are used for applications with technical safety requirements, the relevant instructions must be followed.

Failure to use Schneider Electric software or approved software with our hardware products may result in injury, harm, or improper operating results.

Failure to observe this information can result in injury or equipment damage.

© 2011 Schneider Electric. All rights reserved.

1 - Presentation 5

2 - Consultant user 6

3 - Operator user 12

4 - Appendix 30



1	Presentation	
	Introduction	5
	Glossary	5
	About this document	5
	Type of user	5
2	Consultant user	
	Overview of Xflow software	6
	Connecting to Xflow	6
	Home page characteristics	6
	Energy Monitoring functions	7
	Synoptics	7
	Charts	8
	Dashboards	9
	Peripherals	10
	Load control	11
3	Operator user	
	Overview of Xflow software	12
	Connecting to Xflow	12
	Home page characteristics	12
	Energy Monitoring functions	13
	Synoptics	13
	Charts	14
	Dashboards	15
	Peripherals	16
	Load control	17
	Configuration tab	18
	Energy management settings	18
	Dashboards	18
	Charts	19
	Synoptics	19
	Load control	20
	Create and change a reservation	20
	Modify an area	20
	Modify an exception	21
	Configuration functions	22
	Connections	22
	Peripherals	22
	Variables	23
	Convert a variable	25
	Change of scale	26
	Change of unit	27
	Change of pulse weight	27
	Units	27
	Reports	27
	Alarms	28
4	Appendix	
	Hardware connection to iRIO	30
	Variable management	32

Glossary

Abbreviation	Detailed meaning
Wh	Watt-hour
iRIO	Energy Management Controller product name
Xflow	Web-server integrated in iRIO (the software used here)
Variable	A variable corresponds to information (for example: energy, current, voltage values...) processed and stored by Xflow.

About this document

At a glance

Document purpose

The aim of this manual is to provide users, installers and maintenance personnel with the technical information needed to use the on-site energy management tool web-application.

Scope

This document applies to the iRIO web-application.

Related documents

You can also download technical publications and other technical information from our website at www.schneider-electric.com.

User comments

We welcome your feedback concerning this document. You can reach us by e-mail at techcomm@schneider-electric.com.

Type of user

Remember to ask your system integrator for both "Consultant" and "Operator" access rights, with the corresponding logins and passwords.

There are **3 different types of Xflow users**.

Consultants: They can view all consumption data, charts and dashboards (aggregations), but cannot configure Xflow.

Operators: They can view the same items as Consultants and can also configure variables and charts.

Configurator: This is the subcontractor who configured the entire iRIO. The Configurator has roughly the same rights as the administrator except system rights.

If you are a user with "**Operator**" rights, go directly to chapter 3. If you have "**Consultant**" rights, start with chapter 2.

***Note:** To correctly run this web-application, you need Internet Explorer 6.*

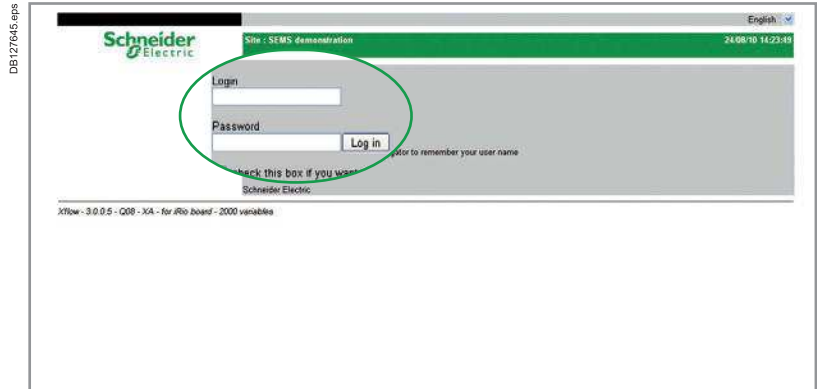
This chapter describes the way to enter the software and every tab included in it. It will give a detailed explanation of consultant rights, from connecting to Xflow to configuring certain functions.

Connecting to Xflow

On your **Internet browser**, instead of entering an internet address (such as www.schneider-electric.com), enter the IP address of your iRIO.
The Xflow configurator will give you this address.

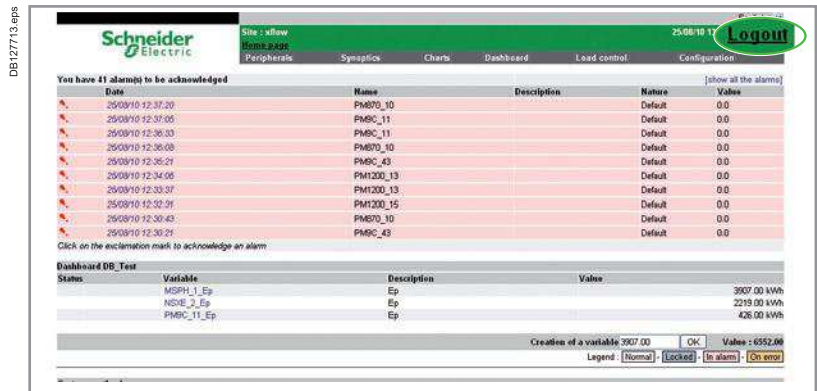


A **new web-page** is displayed, asking you for a Login and a Password. The iRIO administrator will give you this information. After **entering the correct information**, a home page will be displayed.

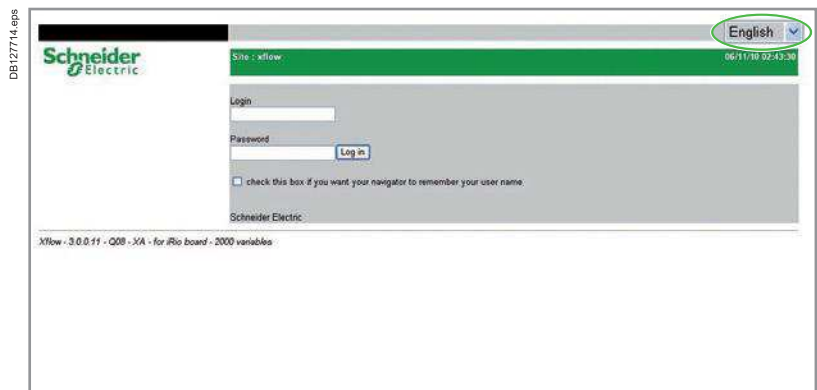


Home page characteristics

On the top right of the screen, a **"Logout"** button lets you **disconnect from Xflow**.
If you click this button, you will return to the user and login screen.

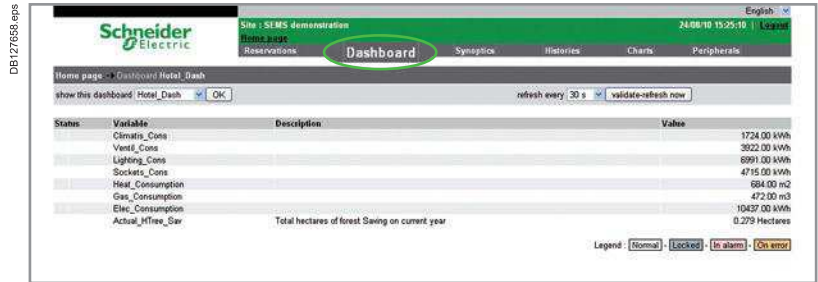


Finally, there is a **language button**. You can click on this drop-down list and select English, Spanish, Italian or French.

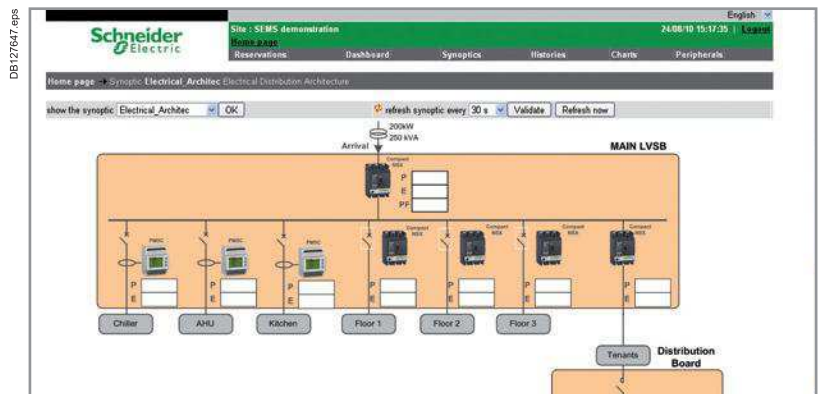


Synoptics

If you want to display your consumption synoptic, savings or electrical installation, you have to click on the "Synoptics" tab. The synoptics let you see the information concerning your installation: temperatures, consumption data from your meters, etc..



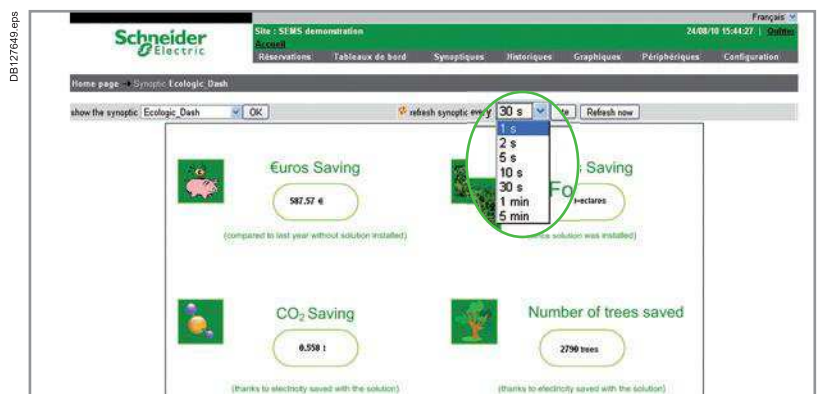
On this following screen, you will find the first synoptic of your list.
 Here we have the electrical architecture of an installation with all the energy and power consumption data.
 Various options are presented.



You can access a list containing every synoptic created within the software.
 If you select the arrow with your mouse, a list will appear with all the synoptics.
 If you select one of them, the background picture will be replaced by another.
 Here is the example of a savings synoptic with the consumption, money and CO2 savings since iRIO was installed.



Another option lets you refresh the synoptic at regular intervals to display updated values. You can choose among different refresh periods from 1 second to 5 minutes.



There is a **legend at the bottom** of the screen that explains the colour codes that indicate the variable status:

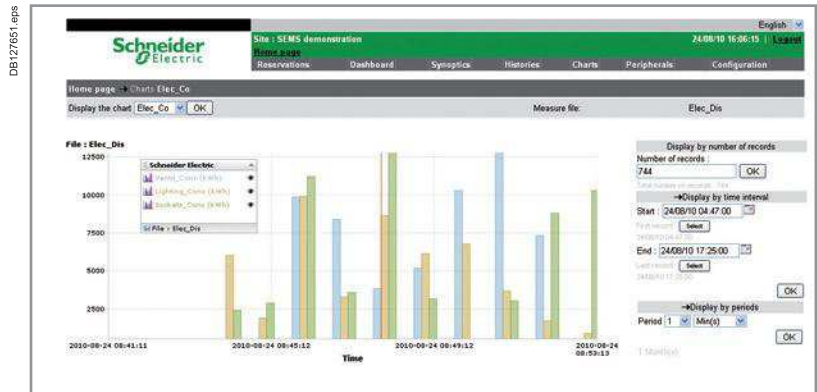
- pink: submitted to an alarm
- brown: an error has occurred on the peripheral; Xflow cannot recognize the variable or the peripheral
- blue: the variable is locked (because it is no longer used) but still exists in the picture.




Charts

If you want to use a chart to display your consumption by day, month or year or if you **want to visualise the regularity of your temperatures** or any other value, use the charts tab.

You can display several charts in the Xflow software. The charts show recorded consumption recorded and can be used to monitor variations over a given period.



The **name of the chart** and an arrow  are displayed on the left side of the chart.

You can select the chart you want from this list, in the same way as for the synoptics. Pick the selected chart then click "OK" with your mouse.

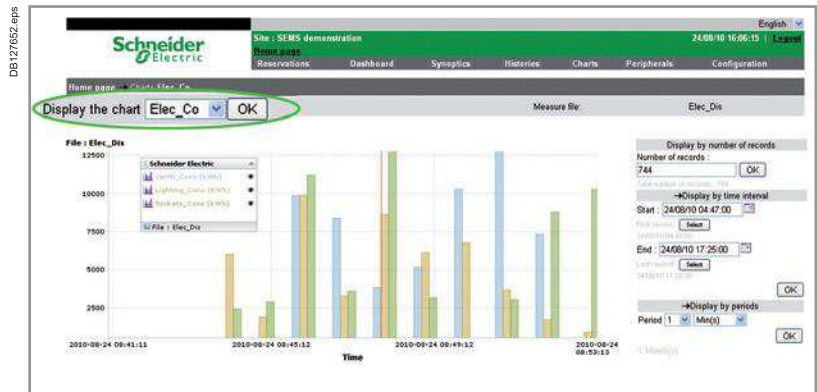

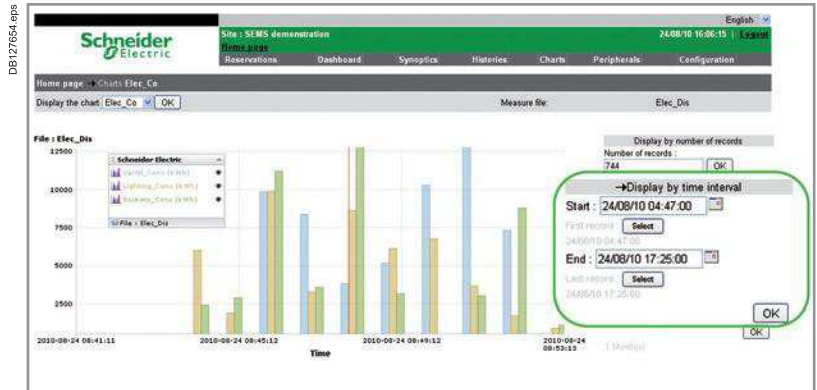



Chart display settings are found on the right side of the graph.

The first setting lets you choose the number of records to be displayed on the graph, from 1 to the maximum number of records listed below the setting box.

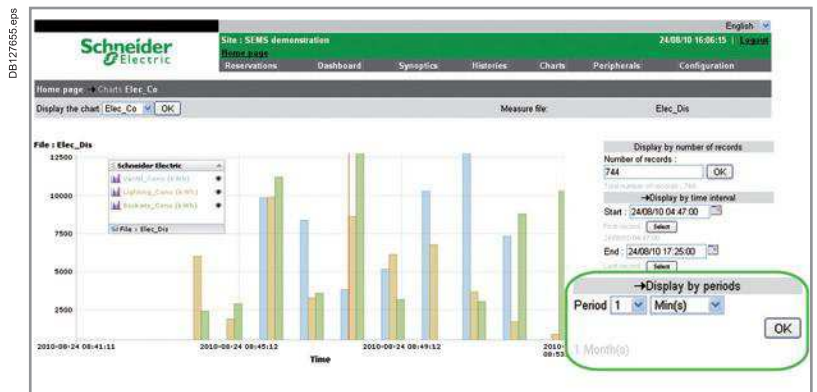





You can also choose a **specific time interval** to be displayed.
 Use the  icon to set the exact time interval you want to display on the chart.
 You must set the start and the end of the interval.
 If you want to display the whole file, simply select "**First record**" for the Start, "**Last record**" for the End and then click "OK".

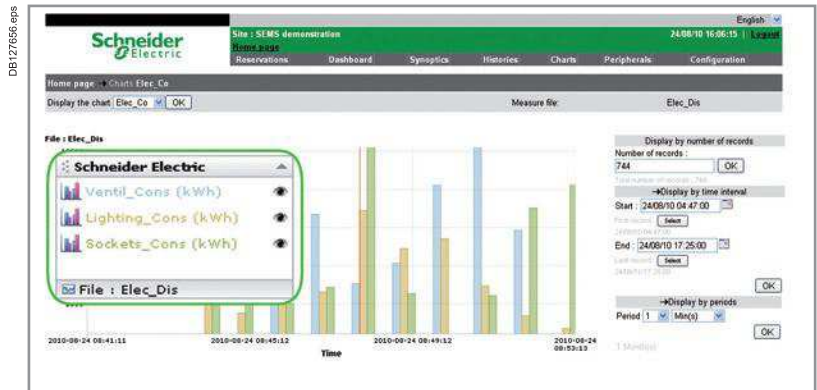


The last option is to **display your chart by period**.
 You can show a record every last 15, 20, 30... minutes, seconds, hours, days...
 You can easily configure this period with the 2 arrows  (cf. screen opposite):

- a first list to set the period
- a second list to set the time interval.



You can also **select the variables** to be displayed in the chart.
 By default, all the variables are displayed, as indicated by the  beside each variable.
 To mask certain variables, click on the  icon beside the corresponding variable, which will be replaced by the  icon, indicating that the corresponding variable will not be displayed.




Dashboards

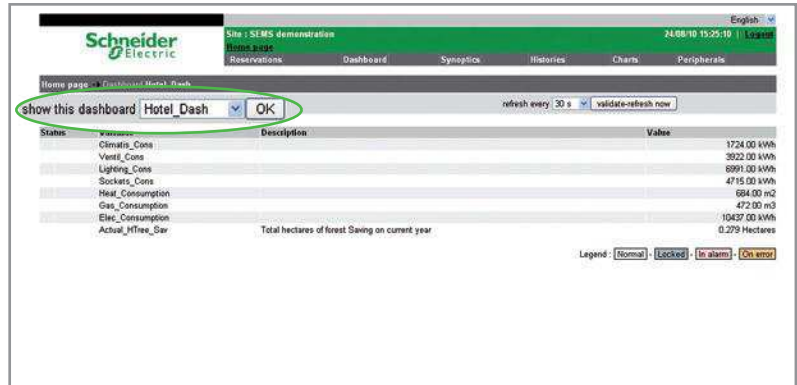
Using the "**Dashboards**" tab, you can display the various dashboards created by the system configurator. Each dashboard groups together a number of variables corresponding to a specific use, for example all the kWh consumption variables of your site.

Variable	Description	Value
Climats_Cons		1724.00 kWh
Ventil_Cons		3822.00 kWh
Lighting_Cons		8991.00 kWh
Sockets_Cons		4715.00 kWh
Heat_Consumption		684.00 m2
Gas_Consumption		472.00 m3
Elec_Consumption		10437.00 kWh
Actual_HTree_Sav	Total hectares of forest Saving on current year	0.279 Hectares


Legend: Normal Locked In alarm On error

First of all, you can **select a specific dashboard** in the list using the arrow  and then press the "OK" button.

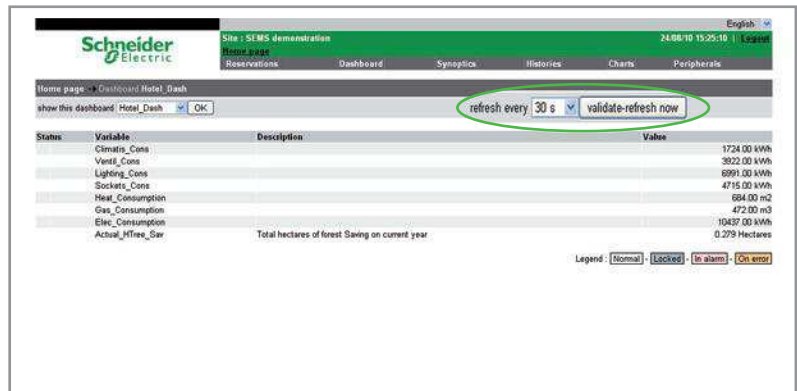
DB127600.eps



If you **want to update the values regularly**, you can set the automatic refresh period from 1 second to 5 minutes.

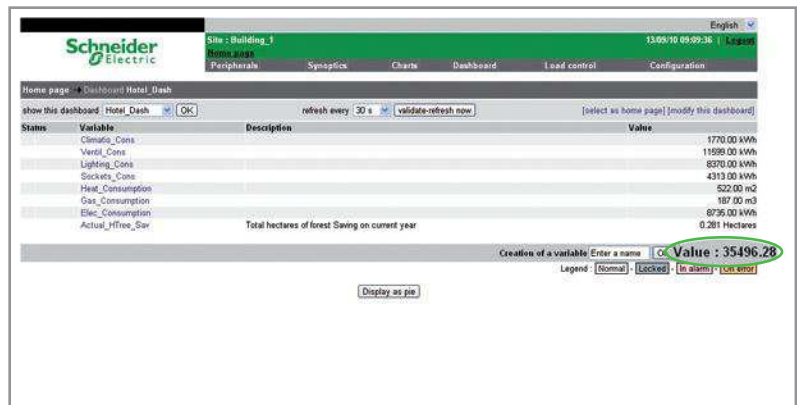
Pick a period in the list opened by the arrow  and then press "Validate refresh now". The values will then be updated accordingly.

DB127661.eps



The **total of your dashboard values** is displayed at the bottom of the dashboard.

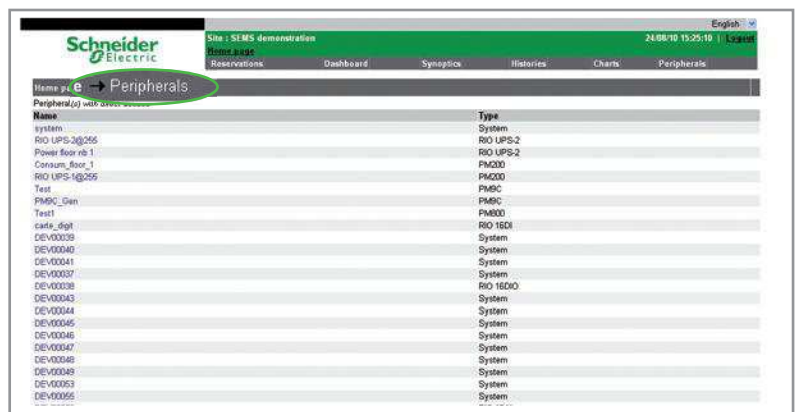
DB127779.eps




Peripherals

If you select the Peripheral tab, the following page will be displayed. This page indicates **every peripheral of your installation** and the connection used for it. A peripheral is a physical device (they report your energy and other measurement) linked to your connection. Connections are explained on page 22.

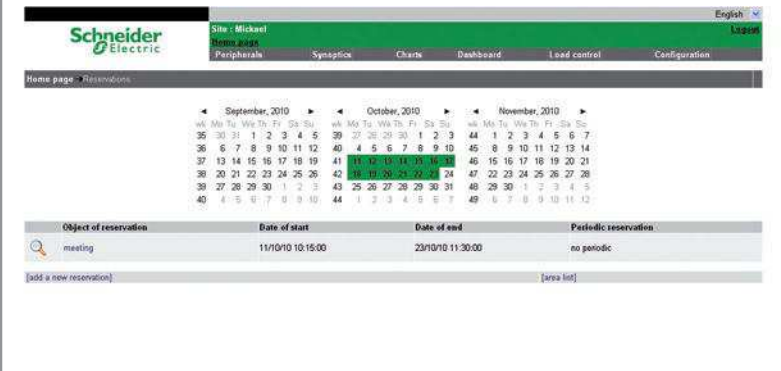
DB127646.eps



Load control

In this tab, you can view all load control reservations that have been created. The reservation period can be highlighted by clicking on .



DB401164.eps




The screenshot shows the Schneider Electric interface for 'Site: Mickael'. The 'Load control' tab is active. A calendar view displays months from September to November 2010. A reservation for a 'meeting' is highlighted on October 10th, with a start time of 10:15:00 and an end time of 11:30:00. Below the calendar is a table of reservations:

Object of reservation	Date of start	Date of end	Periodic reservation
meeting	11/10/10 10:15:00	23/10/10 11:30:00	no periodic

Buttons for '[add a new reservation]' and '[area list]' are visible at the bottom of the table.

You can change dates manually by clicking on the left or right arrows  , or on the title of the calendar.

DB401165.eps



This screenshot shows the same interface but with the calendar view changed to show the year 2010. The reservation for the 'meeting' remains highlighted on October 10th. The table below the calendar is identical to the previous screenshot:

Object of reservation	Date of start	Date of end	Periodic reservation
meeting	11/10/10 10:15:00	23/10/10 11:30:00	no periodic

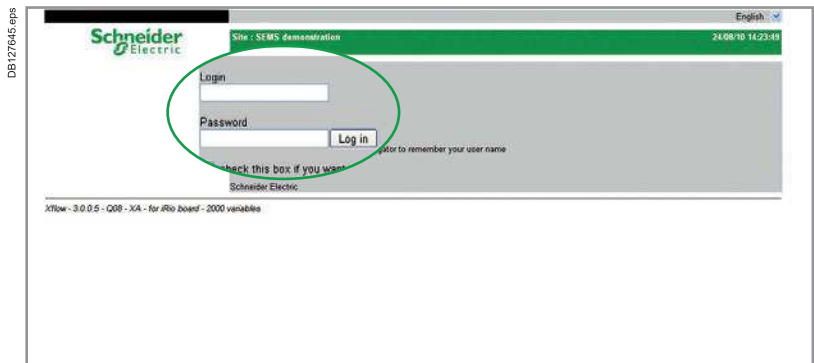
This chapter describes the way to enter the software and every tab included in it. It will give a detailed explanation of operator rights, from connecting to Xflow to configuring certain functions.

Connecting to Xflow

On your **Internet browser**, instead of entering an internet address (such as www.schneider-electric.com), enter the IP address of your iRIO. The Xflow configurator will give you this address.

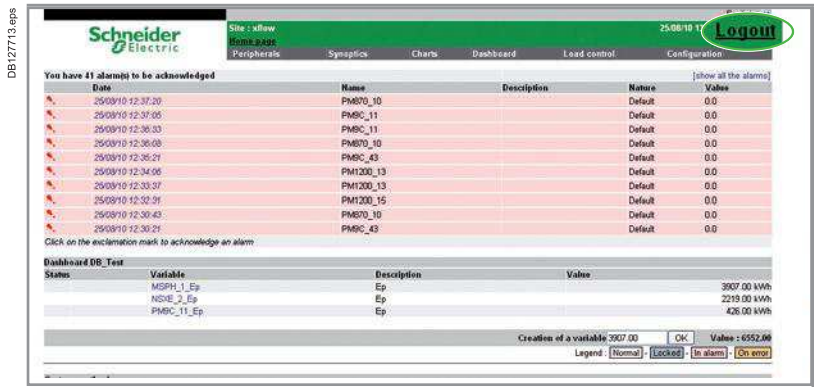


A **new web-page** is displayed, asking you for a Login and a Password. The iRIO administrator will give you this information. After **entering the correct information**, a home page will be displayed.

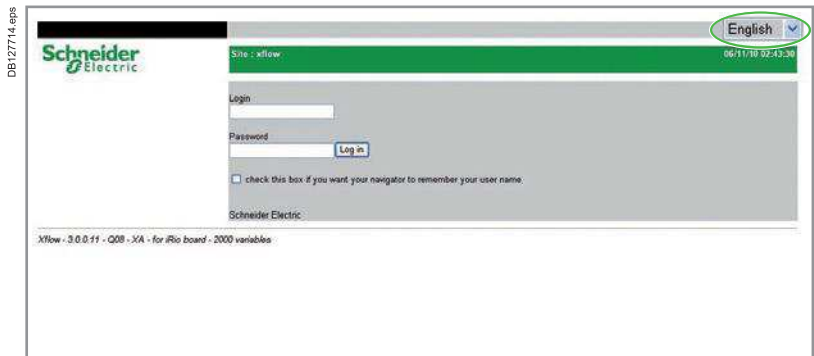


Home page characteristics

On the top right of the screen, a **"Logout"** button lets you **disconnect from Xflow**. If you click this button, you will return to the user and to the login screen.

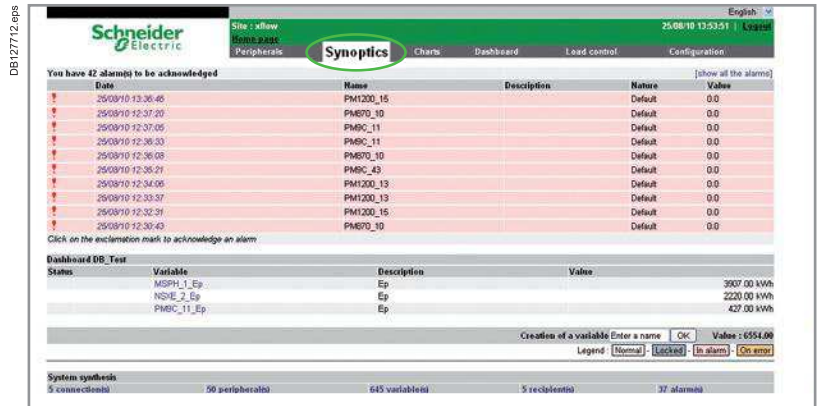


Finally, there is a **language button**. You can click on this drop-down list and select English, Spanish, Italian or French.



Synoptics

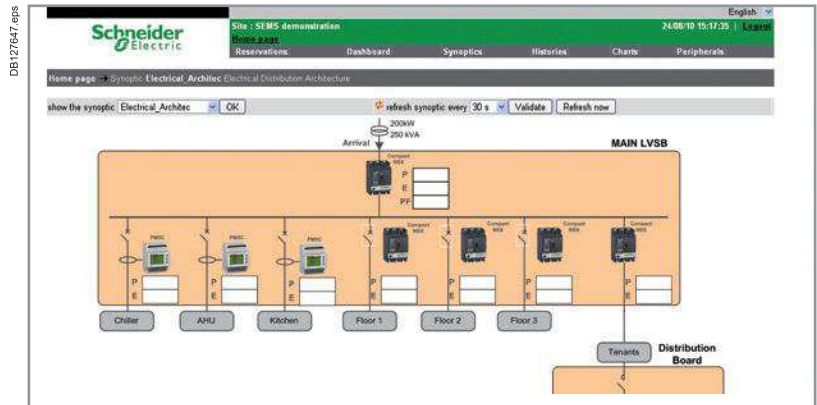
If you want to display your consumption synoptic, savings or electrical installation, you have to click on the **"Synoptics"** tab. The synoptics let you see the information concerning your installation: temperatures, consumption data from your meters, etc..



On this following screen, you will find the first synoptic of your list.

Here we have the electrical architecture of an installation with all the energy and power consumption data.

Various options are presented.

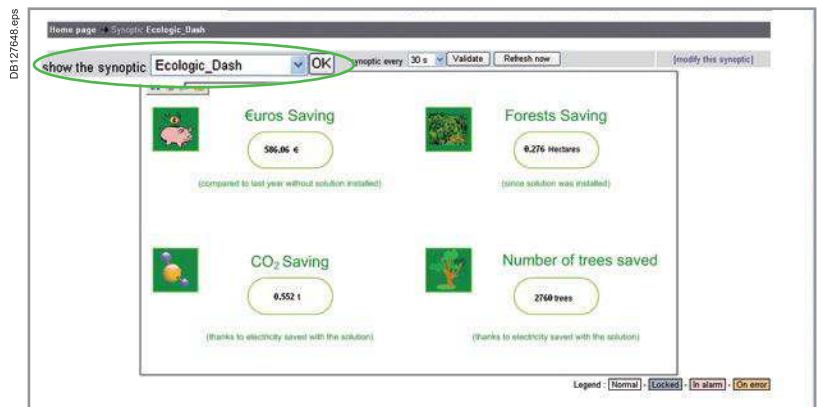


You can access a **list containing every synoptic** created within the software.

If you select the arrow with your mouse, a list will appear with all the synoptics.

If you select one of them, the background picture will be replaced by another.

Here is the example of a savings synoptic with the consumption, money and CO₂ savings since iRIO was installed.

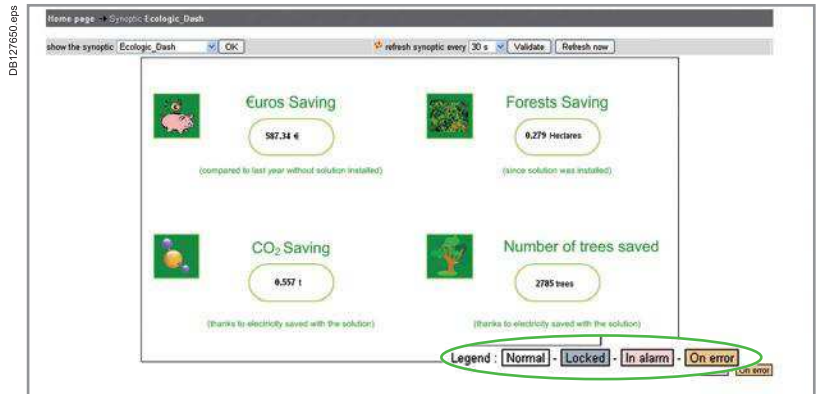


Another option lets you **refresh the synoptic** at regular intervals to display updated values. You can choose among different refresh periods from 1 second to 5 minutes.



There is a **legend at the bottom** of the screen that explains the colour codes that indicate the variable status:

- pink: submitted to an alarm
- brown: an error has occurred on the peripheral; Xflow cannot recognize the variable or the peripheral
- blue: the variable is locked (because it is no longer used) but still exists in the picture.



Charts

If you want to use a chart to display your consumption by day, month or year or if you **want to visualise the regularity of your temperatures** or any other value, use the charts tab.

You can display several charts in the Xflow software. The charts show recorded consumption recorded and can be used to monitor variations over a given period.



The **name of the chart** and an arrow are displayed on the left side of the chart.

You can select the chart you want from this list, in the same way as for the synoptics.

Pick the selected chart then click "OK" with your mouse.




Chart display settings are found on the right side of the graph.

The first setting lets you choose the number of records to be displayed on the graph, from 1 to the maximum number of records listed below the setting box.

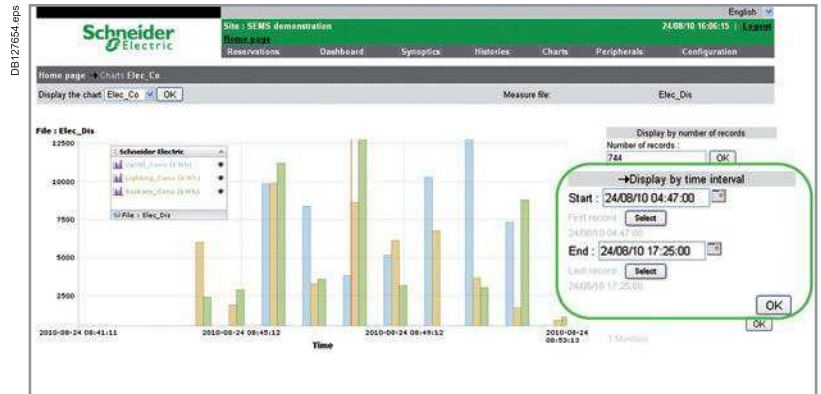


You can also choose a **specific time interval** to be displayed.

Use the  icon to set the exact time interval you want to display in the chart.


You must set the start and the end of the interval.

If you want to display the whole file, simply select "**First record**" for the Start, "**Last record**" for the End and then click "**OK**".

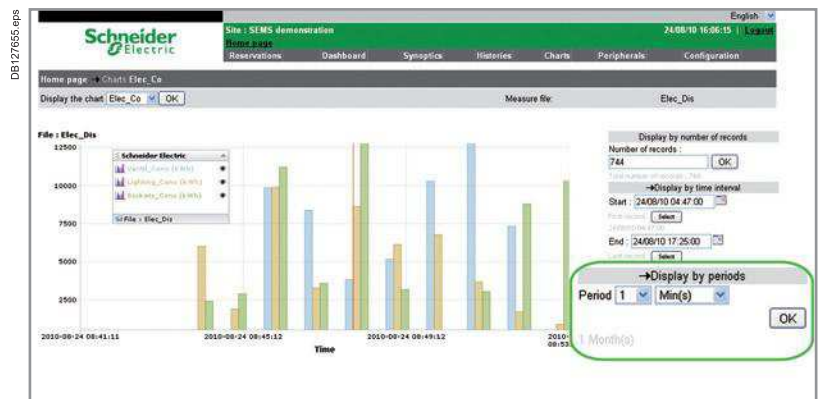


The last option is to **display your chart by period**.


You can show a record every 15, 20, 30... minutes, seconds, hours, days...


You can easily configure this period with the 2 arrows  (cf. screen opposite):


- a first list to sets the period
- a second list to set the time interval.

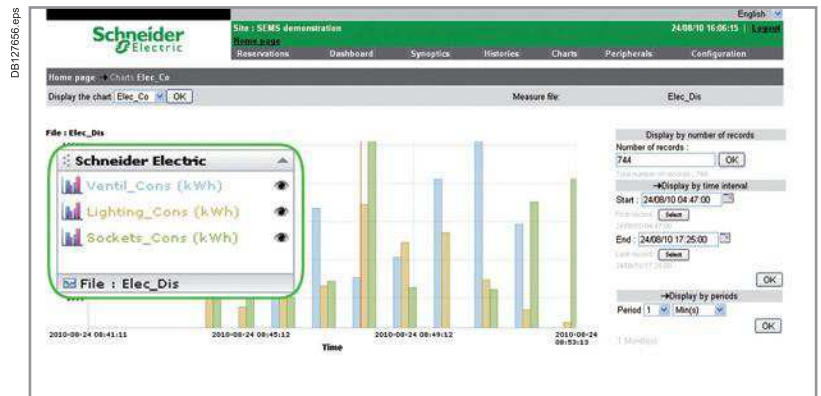


You can also **select the variables** to be displayed in the chart.

By default, all the variables are displayed, as indicated by the  beside each variable.

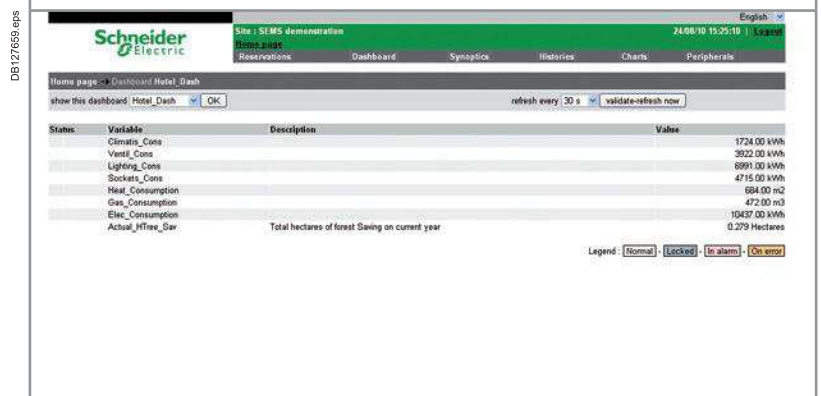
To mask certain variables, click on the  icon beside the corresponding variable, which will be replaced by


the  icon, indicating that the corresponding variable will not be displayed.

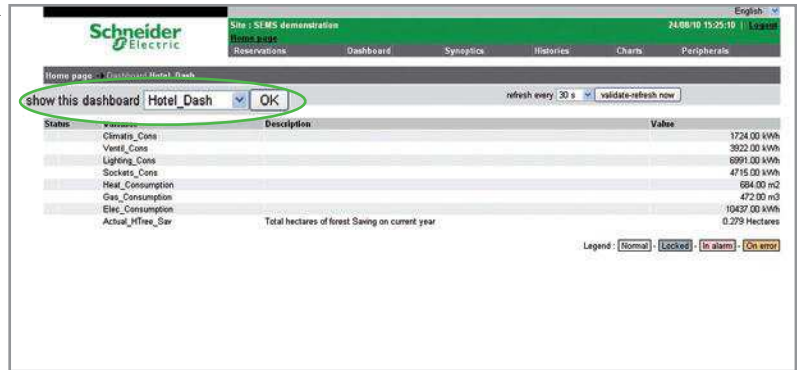


Dashboards


Using the "**Dashboards**" tab, you can display the various dashboards created by the system configurator. Each dashboard groups together a number of variables corresponding to a specific use, for example all the kWh consumption variables of your site.

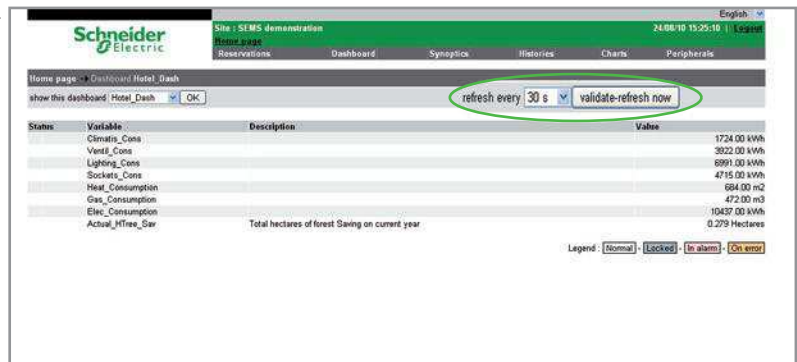


First of all, you can **select a specific dashboard** in the list using the arrow  and then press the "OK" button.

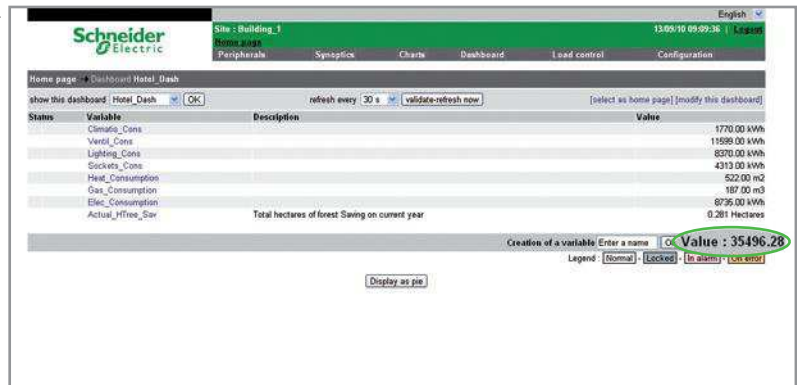


If you **want to update the values regularly**, you can set the automatic refresh period from 1 second to 5 minutes.

Pick a period in the list opened by the arrow  and then press "Validate refresh now". The values will then be updated accordingly.

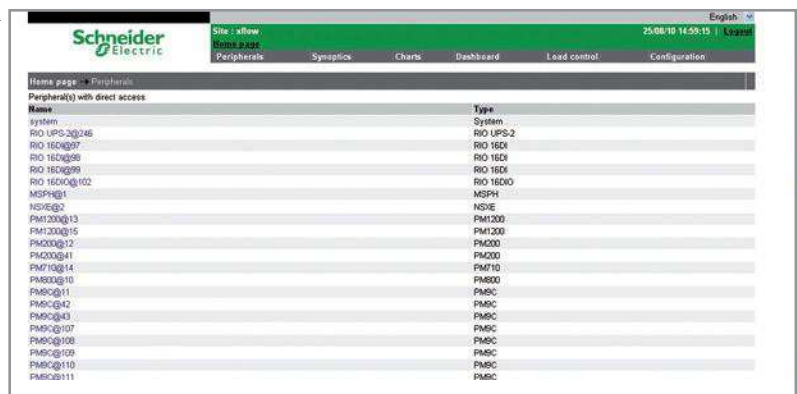


The **total of your dashboard** values is displayed at the bottom of the dashboard.




Peripherals


If you select the Peripheral tab, the following page will be displayed. This page indicates **every peripheral of your installation** and the connection used for it. A peripheral is a physical device (they report your energy and other measurement) linked to your connection. Connections are explained on page 22.




Load control

In this tab, you can view all load control reservations that have been created. The reservation period can be highlighted by clicking on .

DB401164.eps

Object of reservation	Date of start	Date of end	Periodic reservation
 meeting	11/10/10 10:15:00	23/10/10 11:30:00	no periodic

[add a new reservation] [aria list]

You can change dates manually by clicking on the left or right arrows , or on the title of the calendar.

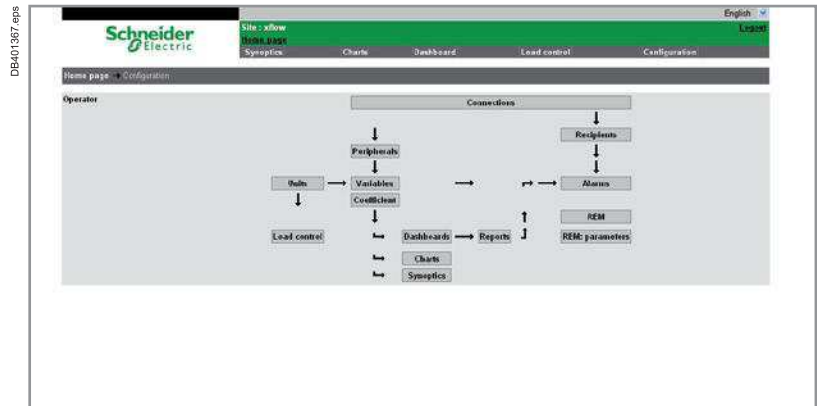
DB401165.eps

Object of reservation	Date of start	Date of end	Periodic reservation
 meeting	11/10/10 10:15:00	23/10/10 11:30:00	no periodic

[add a new reservation] [aria list]

This tab lets the user configure Xflow for Operator access level.

Here is the home page of the "Configuration" tab. There are a number of boxes with specific characteristics.



Energy management settings

Dashboards

Below the "Variables" box, you see the "Dashboards" box.

If you click on this box, you will display a new page listing every dashboard you have in your Xflow software.

If you select one of them, you will display its details.



Here is the details screen for one dashboard. You can see the various connected variables along with a description of each.



You can select "Show this dashboard" to display the dashboard (see page 15).

You will see the values and units of your dashboard variables.

By clicking on the arrow , you can navigate from one dashboard to another.



Charts

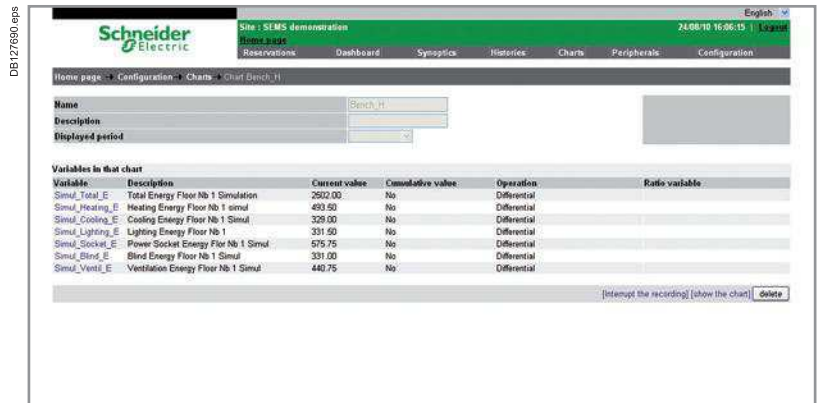
Below the dashboards box, you can see the "Charts" box.

Selecting this box will display the page opposite that lists every chart that has been created.

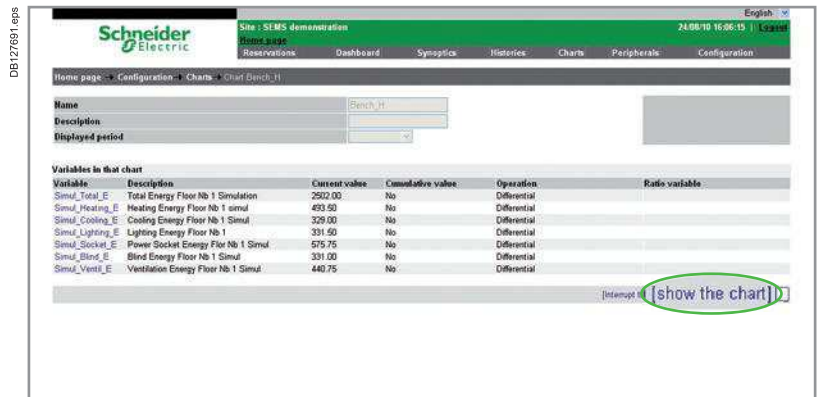


If you select one of these charts you will see a new page with the name of the chart, a short description, the displayed period and every variable recorded and displayed in this chart.

If you pick one variable, you will display its details.

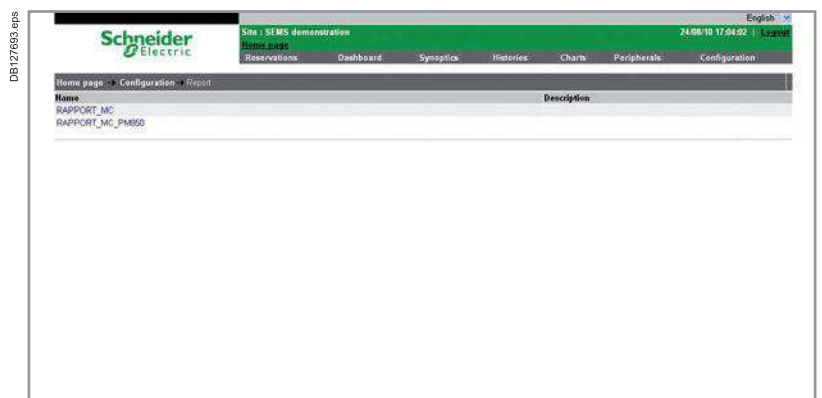


On the bottom right, you can click the "Show the chart" button to display a given chart as described on page 14.



Synoptics

By clicking on the "Synoptics" box, you can list every synoptic included in your Xflow software.



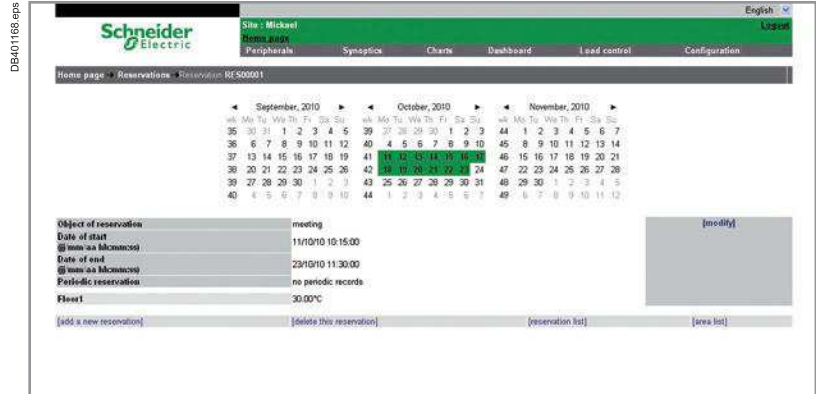
Load control

Create and change a reservation

Every reservation included in your Xflow software is listed when you click on the "Load control" box. A reservation is an instruction that changes the normal instructions programmed for the week.

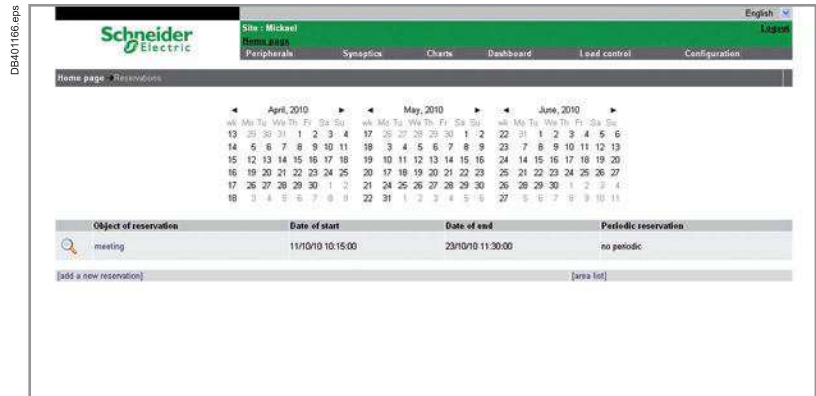
You can display details of a reservation by clicking on it in the list.

You can also click on "add a new reservation" if you want to regulate a building area defined in the load control menu.



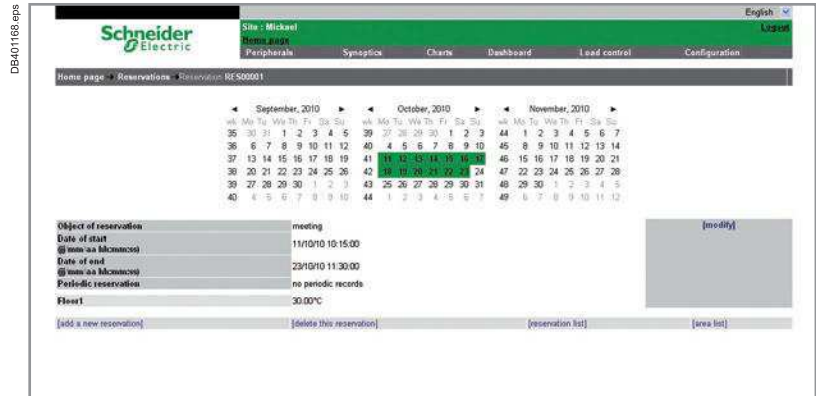
A list of different parameters will appear on the screen. If you want to change the parameters proposed, click on "modify".

After modifying parameters, confirm by clicking on "finish".

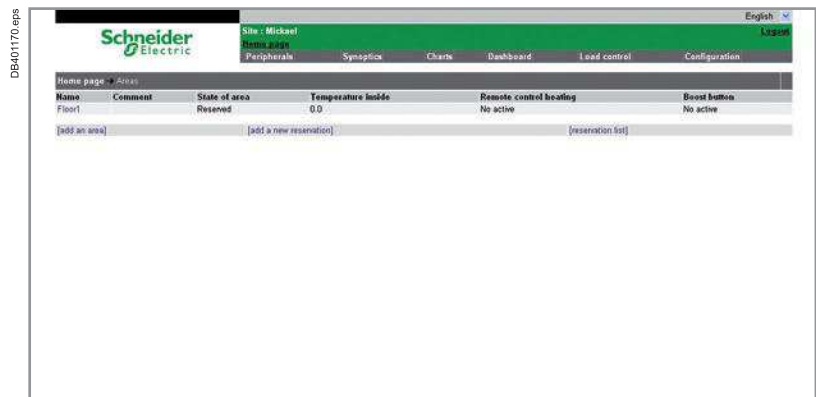


Modify an area

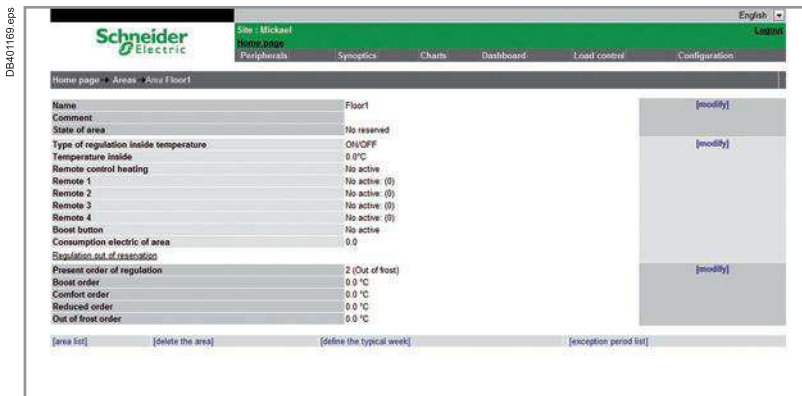
Your building has been divided up into different areas. If you want to see these areas, click on "Area list".



A list with different zones appears. If you want to modify details of an area, click on name of the corresponding area.



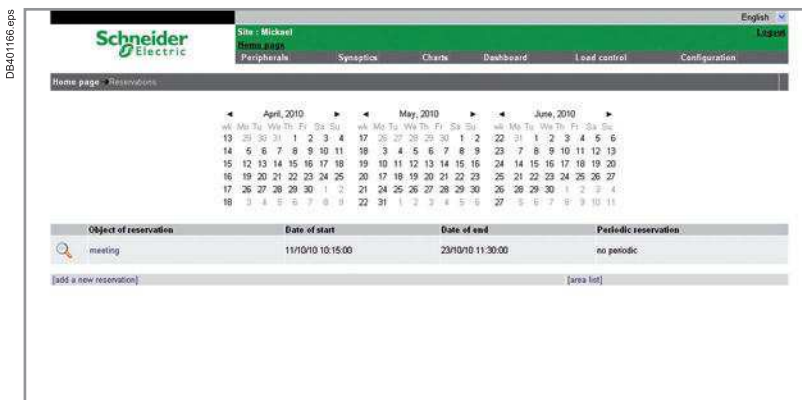
If you want to change the parameters, click on **"modify"**.



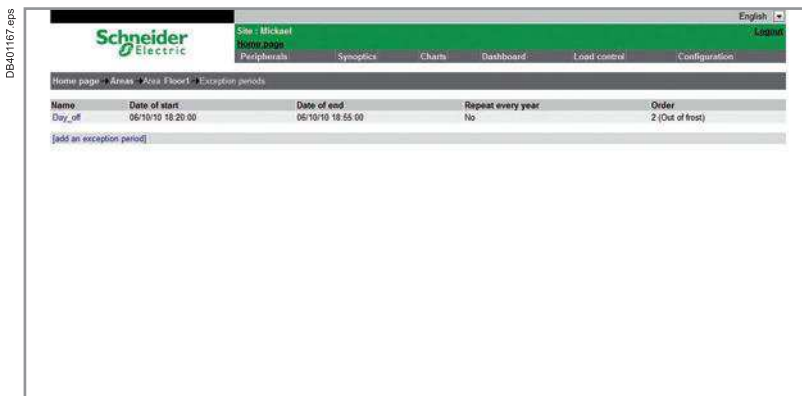
Modify an exception

An exception forces regulation to another order (pre-defined temperature level) for a specified period even if your typical week is activated.

To display the list of exceptions, select an area and click on **"exception period list"**.



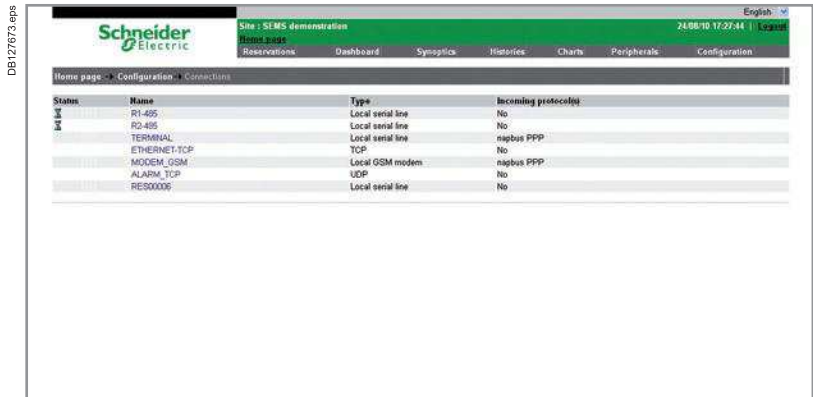
To display details of a given exception, click on it in the list. By clicking on **"modify"**, you will be able to modify parameters. After modification of the parameters, confirm by clicking on **"finish"**.



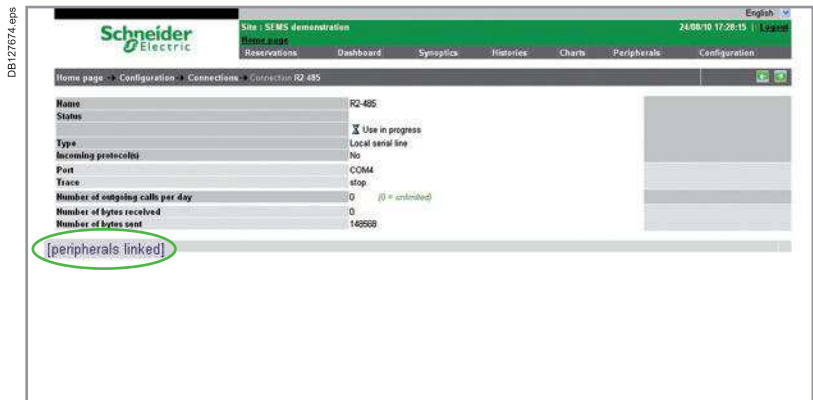
Configuration functions

Connections

The top box in the Configuration home page is "Connections". When this box is clicked, a screen is displayed listing all the physical connections. Details can be displayed for each connection by clicking on the corresponding name in the list.

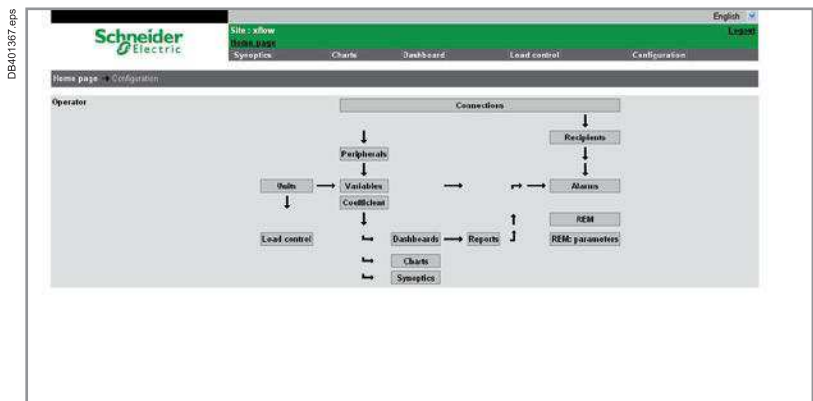


Here is a screen with the details of one of the physical connections.



Peripherals

On the configuration home page, the "Peripherals" box can be found just below the "Connections" box.

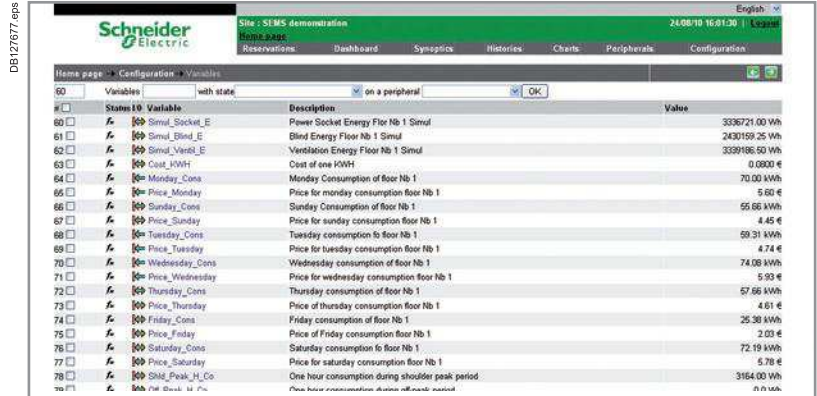


If you click on this box, it brings up a screen that is very similar to the peripheral screen on page 16. To display details on any peripheral, simply click on the corresponding peripheral name to display the same page as in the previous chapter.

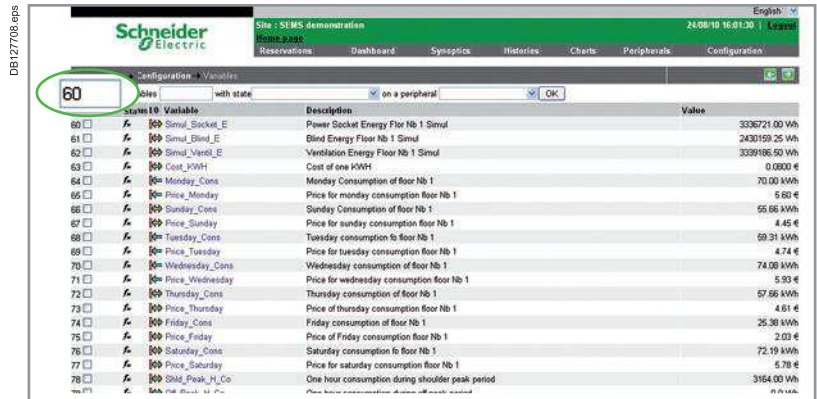
Status	Name	Type
1	RIO UPS-26/255	RIO UPS-2
2	Power four nb. 1	RIO UPS-2
3	Consigne_Soc_1	FM000
4	RIO UPS-16/255	FM000
5	PM880_TR15	PLC Modbus-TCP
6	PM890_TR15_Bis	PLC Modbus-TCP
7	NSX_RPV1_T9H	PLC Modbus-TCP
8	NSX_PAC_1	PLC Modbus-TCP
9	NSX_PAC_2	PLC Modbus-TCP
10	NSX_PAC_4	PLC Modbus-TCP
11	PM8C_VRV2	PLC Modbus-TCP
12	NSX_CV03	PLC Modbus-TCP
13	NSX_CV03_241.2	PLC Modbus-TCP
14	PM8C_VRV2_Bis	PLC Modbus-TCP
15	NSX_ADO_1	PLC Modbus-TCP
16	NSX_ADO_241.2	PLC Modbus-TCP
17	NSX_LTI	PLC Modbus-TCP
18	NSX_LTB	PLC Modbus-TCP
19	PM8C_VRV1	PLC Modbus-TCP
20	PM8C_VRV4	PLC Modbus-TCP

Variables

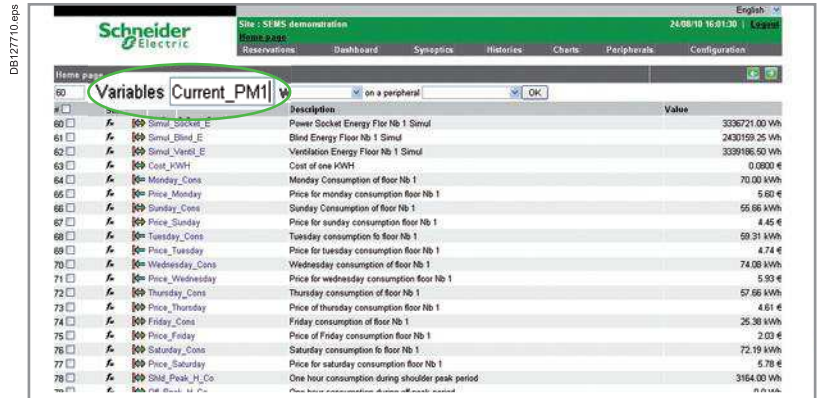
Below the Peripherals box is the "Variables" box. If you click on it, a new page appears listing all your variables along with a number of icons and empty fields.



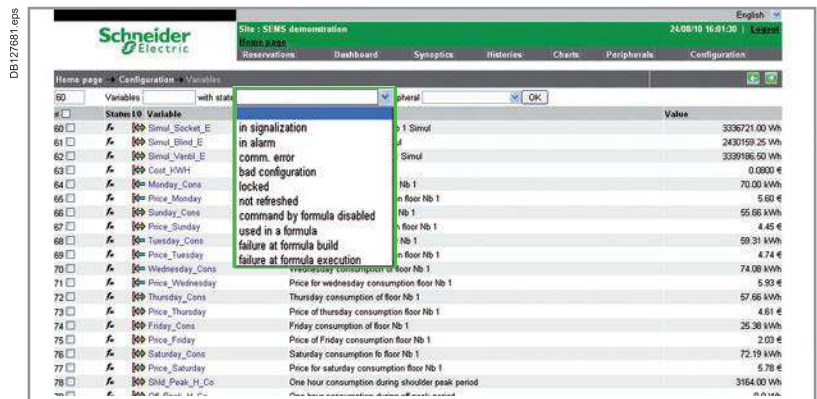
The first empty field is on the top left of this screen. It can be used to **enter the number of a variable you want to display**. Every variable is assigned a specific number that identifies it. If you enter "300", the display will start with the 300th variable and then the following twenty (because 20 variables are displayed on one page).



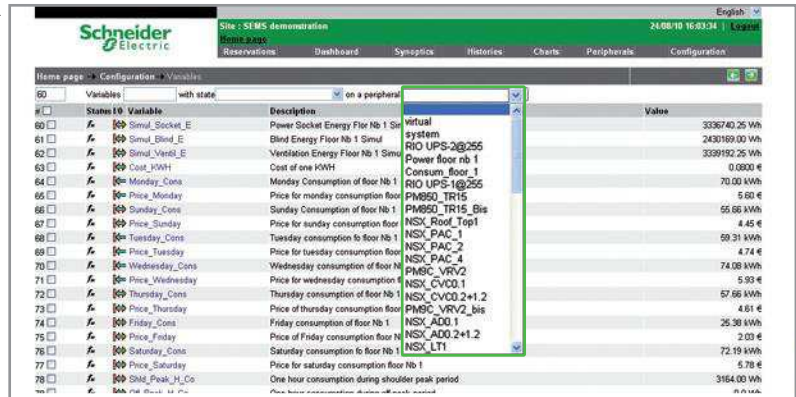
To the right of the white rectangle used to enter the variable number is another rectangle in which you can **enter the name of a variable** instead of looking for it on every page (if there are a lot of variables, this is an easier way to find one if you do not have its number). You must enter the exact name or the variable will not be found.



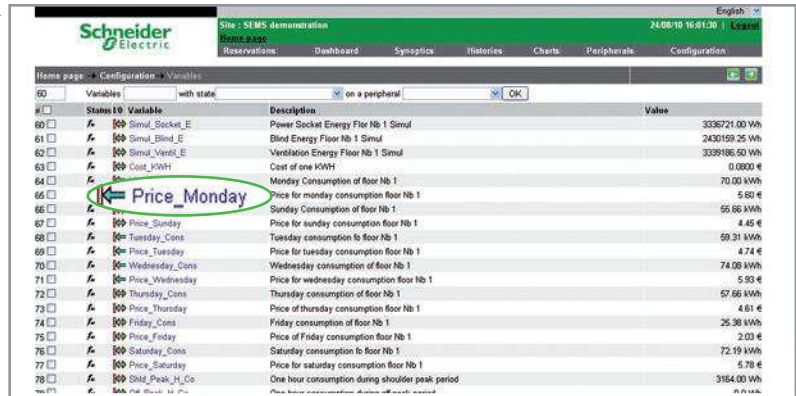
On the right, you can **display your variables by status**. For instance, you can list all the variables that are "in alarm" or "locked".



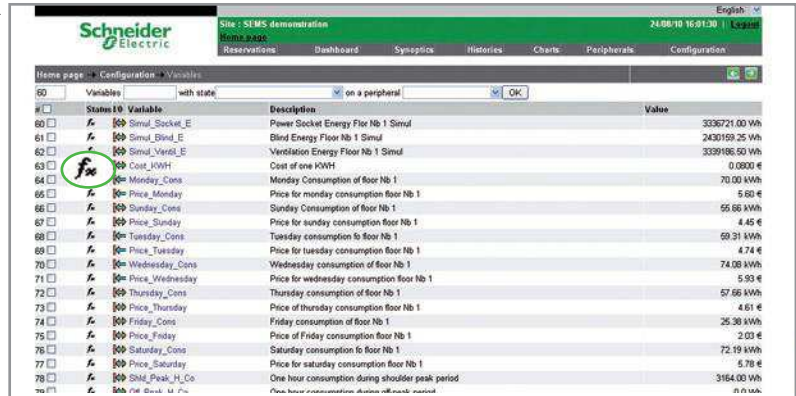
You can also display every variable corresponding to a selected peripheral. The screen opposite shows an example with a number of referenced peripherals.



If you click on one of the variables, you will display the same screen as on page 16. It gives you the details for the selected variable.

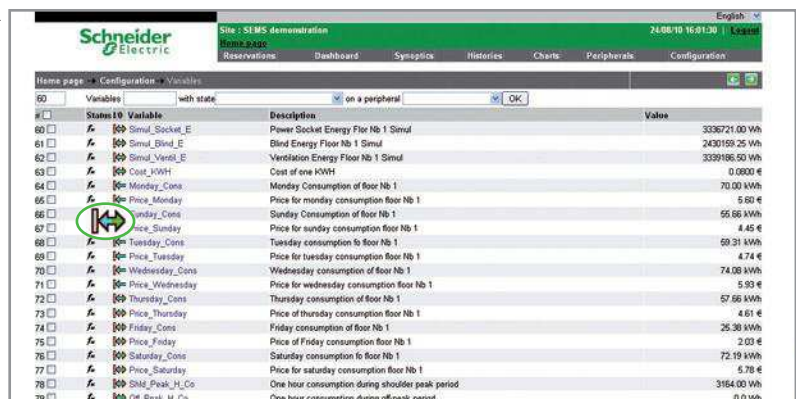



The icon f_x may be displayed in the status column of certain variables. This means that the corresponding variable is used in a formula. The formula is included in the details of the variable.

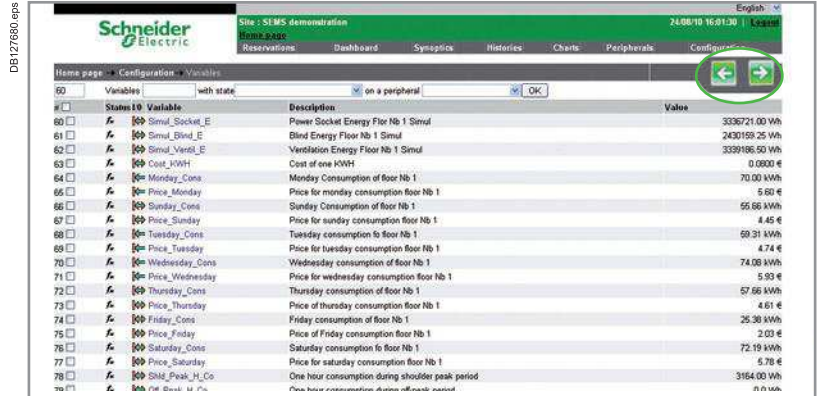


This icon in the I/O column indicates whether or not the variable is both an input and an output variable. This is also indicated in the variable details.

Note:
 Input: the variable is read by Xflow
 Output: the variable is written by Xflow and also can be read.

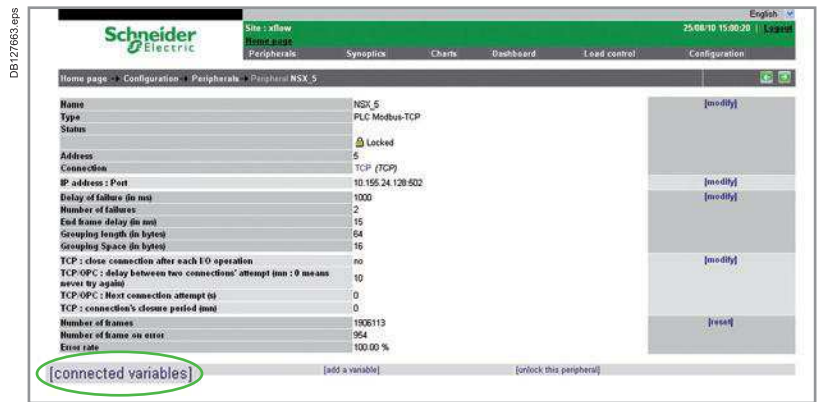


Finally there are two arrows  on the top right of your screen that let you to go to the previous/next page of twenty variables.

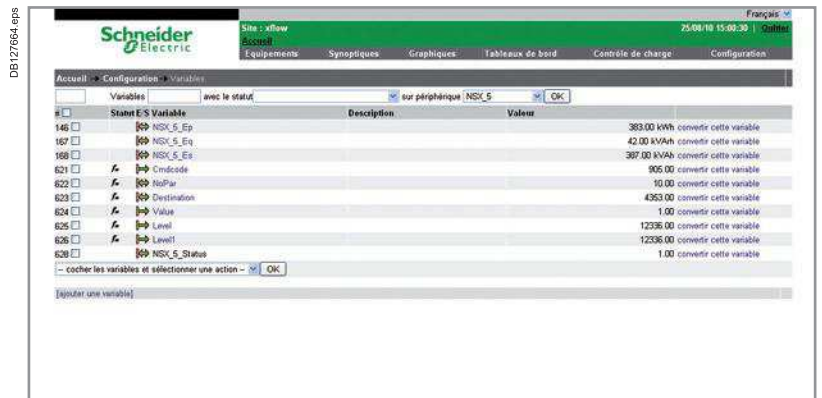


Convert a variable

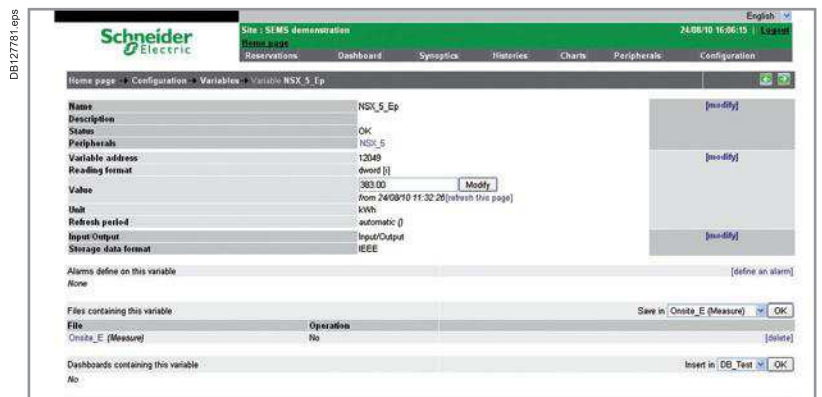
If you select one of these peripherals by clicking on it once with your mouse's left button, a new page will appear giving you the details of your peripheral. You can also display the connected variables of your peripheral by clicking the "Connected Variables" button at the bottom left.



After clicking the "Connected Variables" button (see previous screen), the screen opposite is displayed. It shows all the variables you are recording from your peripheral (current, voltage...).



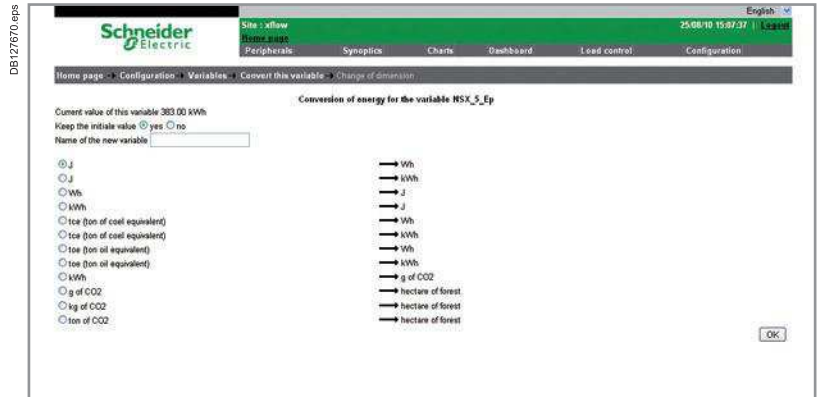
By clicking on one of these variables, you will display their details. You can check these details but you cannot change anything.



Change of unit

In the dimension window (second option in the convert a variable screen), you can **choose a "change of unit"**, for instance change the variable units from Joules to Wh.

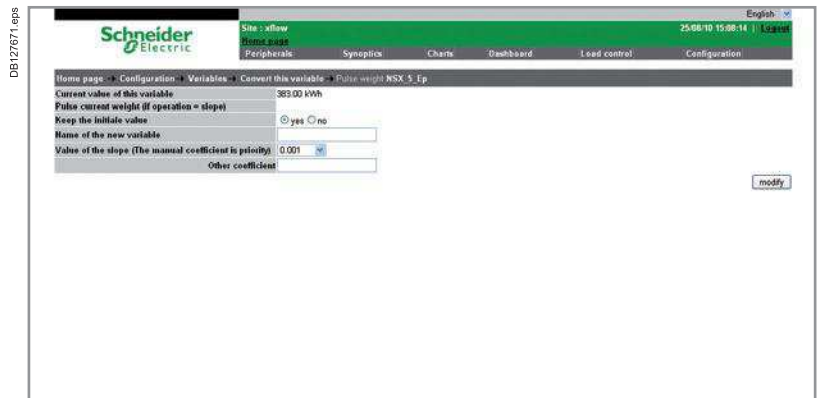
To do this, you have to enter the name of the new variable just as for the change of scale and then select your unit change.




Change of pulse weight

This screen lets you **apply a slope** to your selected variable.

This means you can multiply your current value by any number from 0.001 to 1000000.



Units

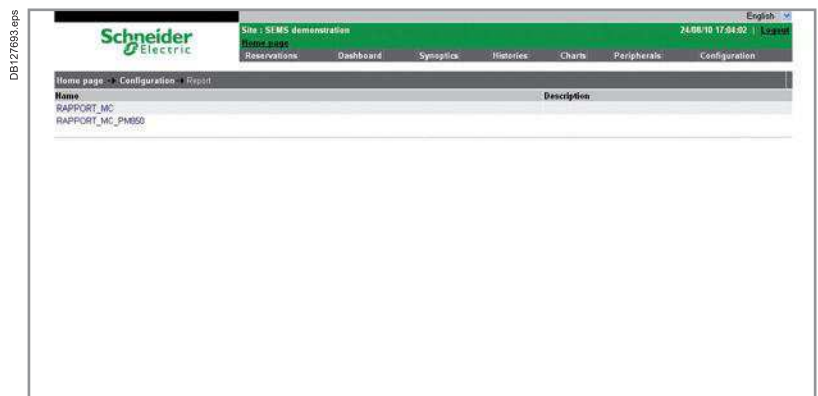
On the left side of the variables box on the configuration home page, there is a **"Units" box**. Click this box to list the units used in the Xflow software. Use the arrow  to scroll through all the pages to see all the units.



Reports

By clicking the the **"Reports" box** on the configuration home page, you can list all the reports created by the system administrator.

Click on any report in the list to display its detailed configuration.



Configuration tab

Report details include **the name of each element included in the report.**

At the bottom you can see a list of alarms directly linked to this report.

Select an alarm to display its details.



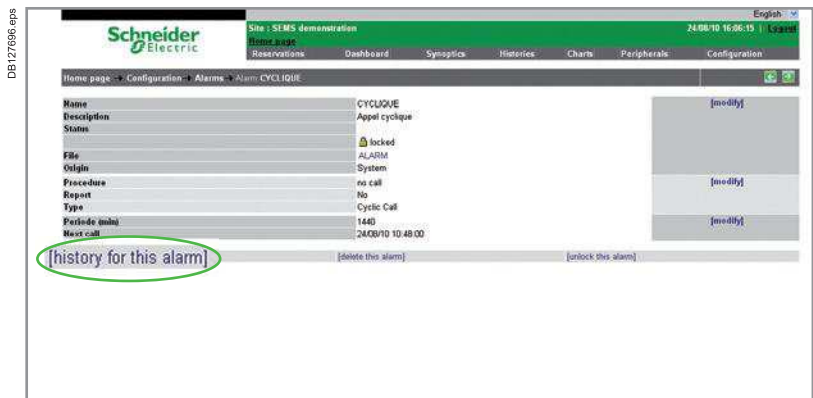
Alarms

If you select the **"Alarms"** box on the configuration home page, a summary of all the alarms will be displayed.

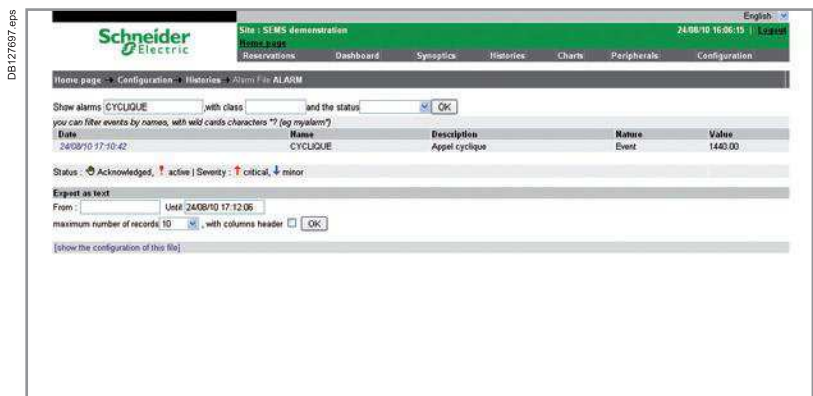


Select any alarm in the list to display its **details and check its history.**

The history indicates the past status changes of the alarm.

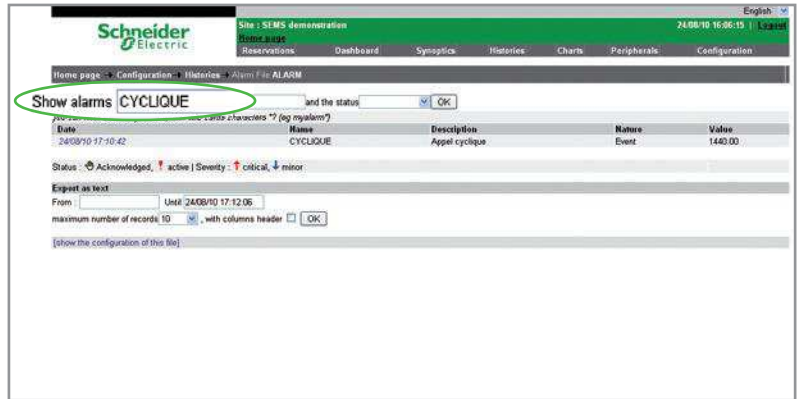


Here is an example of a history for one of the alarms. It indicates **every change of status.**



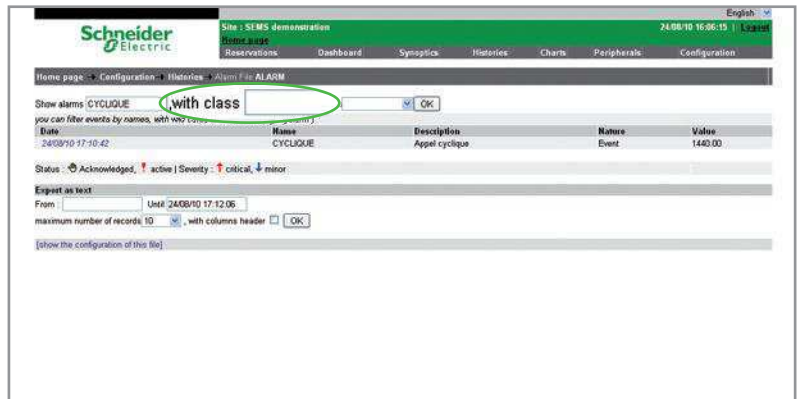
The history details screen offers other possibilities. For instance, in the empty "Show alarms" field, you can **enter the name** of another alarm to see its history. In our case, the alarm name is "CYCLIQUE".

DB127696.eps



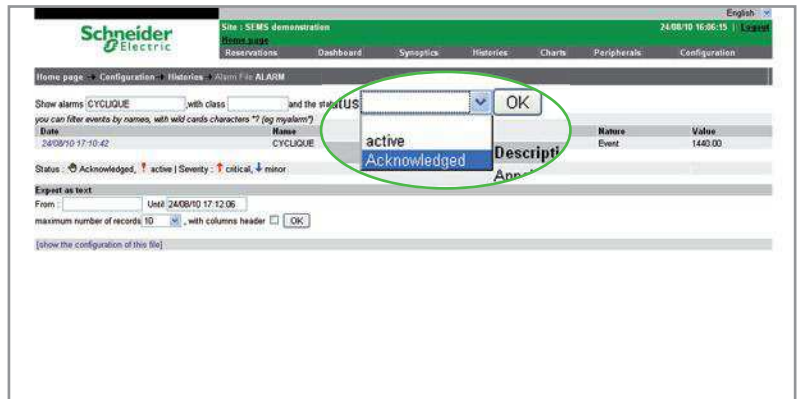
In the "with class" field, you can enter an alarm class to filter by class.

DB127699.eps



The "and the status" field lets you filter the history to display **active** or **acknowledged** alarms.

DB127700.eps



To modify an alarm threshold, go to the alarm created in the configuration menu and click on "**modify**". In this way you can adjust the conditions that determine when the alarm will occur.

DB402360.eps

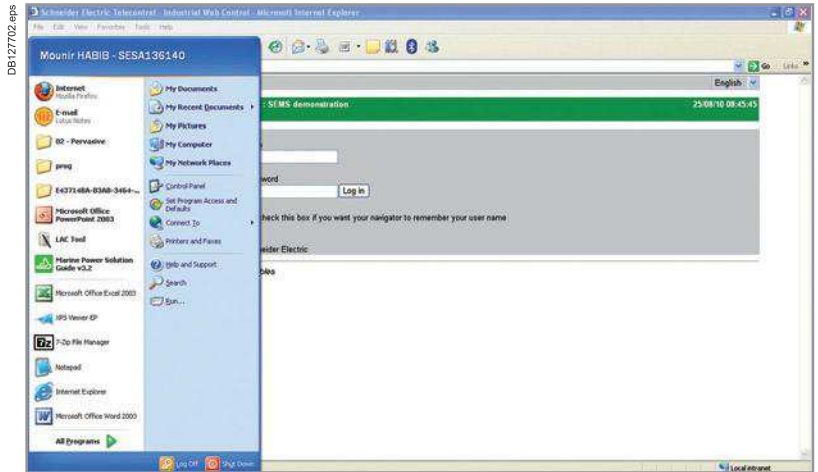


Hardware connection to iRIO

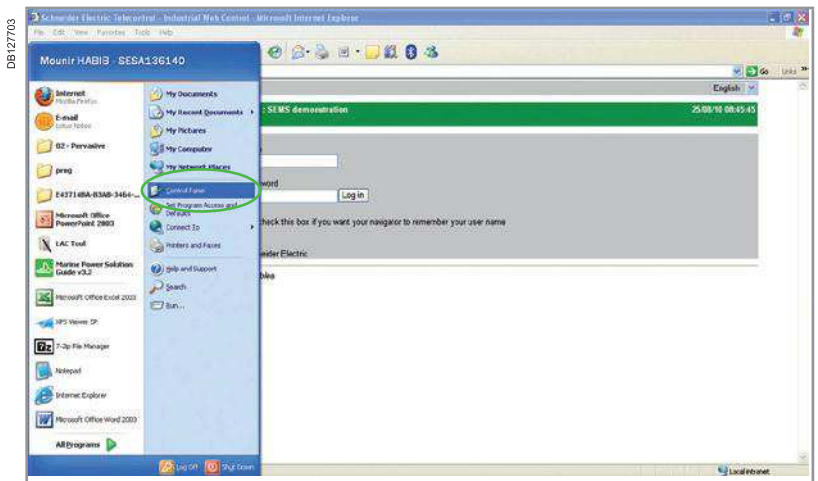
If your iRIO is connected directly to your building network, you can go to chapter 3. If you are connected directly to the iRIO, you must follow the instructions below.

The subcontractor will give you the IP address, the subnet mask and the gateway settings.

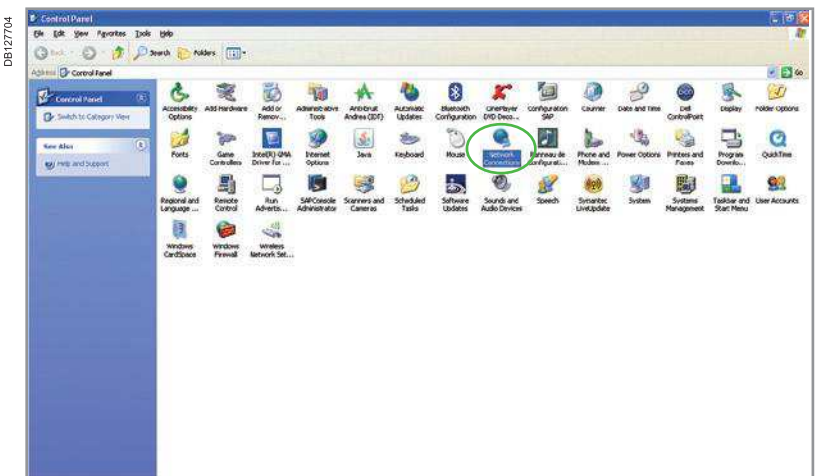
Press the **"Start"** button on the bottom left of your screen. A menu with a number of options appears.



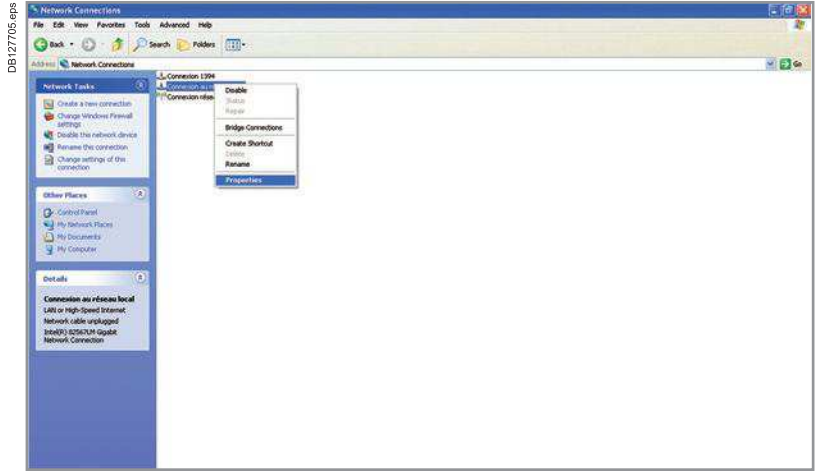
Choose **"Control Panel"** on the right side of the menu. A new window appears.



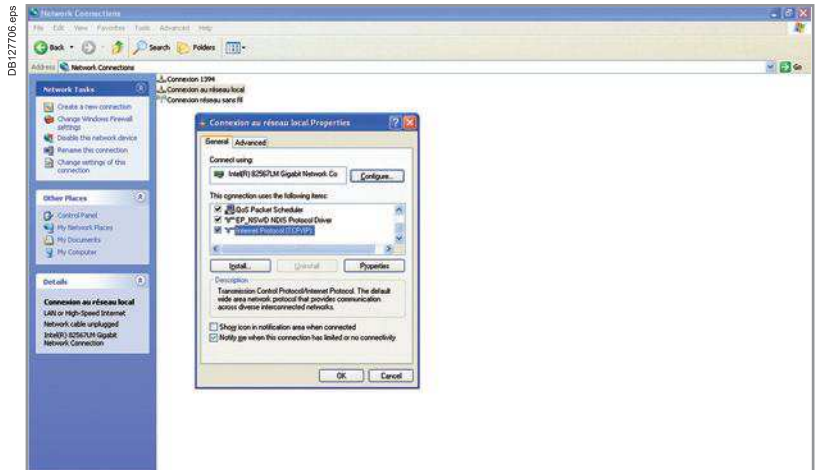
The "Control Panel" is shown on the following screen. Double-click on the **"Network Connections"** icon with the left mouse button.



A new window appears with various connection names. Right click on "**Local Area Connection**" and select "**Properties**" from the options proposed.



A window with many options appears. In the large white frame, click twice on the last option: "**Internet Protocol (TCP/IP)**"

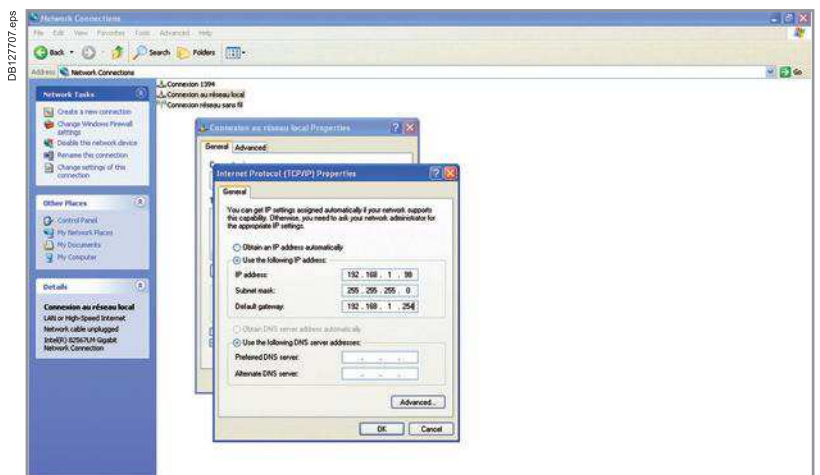


Another window appears. It gives you the choice between "**Automatic Private IP Address**" and "**User Configured**". Pick the second: "**User Configured**".

On the following screen you have the possibility to enter settings for the:

- IP Address
- Subnet Mask
- Default Gateway.

The system administrator will give you all the necessary information to fill in the blank fields.



Search for a variable by number #

Search for a variable by name

Search for a variable by its state

Search for a variable by peripherals

#	Status	Variable	Desc	Value
199		ME4ZR_L4P1_P	F11 (RIO UPS-2@255	67 Convert this variable
200		ME4ZRT_L4P2_P	F12 (RIO 16DI@2	187 Convert this variable
201		PM9P_L4P4_P	F13 (RIO 16DIO@3	868 Convert this variable
202		PM9P_L2P2_P	F14 (RIO 4AI@5	868 Convert this variable
203		ME4ZRT_L4P3_P	F16 (RIO 16DIO@9	582 Convert this variable
204		ME3ZR_L3P1_P	F16 (NSXE@2	191 Convert this variable
205		ME3ZR_L3P2_P	F17 (PM1200@13	84 Convert this variable
206		ME1ZR_L2P3_P	F18 (PM1200@15	86 Convert this variable
207		ME1ZR_L2P4_P	F18 (PM200@12	86 Convert this variable
208		EN40P_L2P2_P	F19 (PM200@41	595 Convert this variable
209		EN40P_L2P5_P	F10 (PM710@14	589 Convert this variable
210		ME4ZR_L4P4_P	F110 (PM800@10	61930 Convert this variable
			F112 (PM9C@11	61517 Convert this variable
			F113 (PM9C@42	68 Convert this variable
			F113 (PM9C@43	
			F15 (RIO UPS-2@246	

Variable selection

Status: see the next for more details




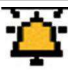







Type :

- Input
- Output
- Input/Output

Value of the variable

You can convert a variable (for more details see below)

iRIO variable status

Name	<p>Assign a clear name allowing unambiguous identification of the variable for the rest of the configuration process.</p> <p>Choose a short name (12 characters maximum), without spaces, punctuation marks or characters representing an operator in the calculation formulae.</p> <p>By default the name is in the form VAR000xx.</p> <p> Each name must be unique. No other variable, alarm, weekly programme or yearly programme can have the same name, otherwise errors may be generated in the calculation formulae. Indeed these formulae use the names in their syntax.</p>	
State	 Variable locked	Interrogation of this variable has been blocked by the user.
	 Faulty variable	Impossible to communicate with the variable. Check the wiring and the state of the associated link.
	 Variable in alarm mode	The variable has been allocated to an alarm, which has been triggered (crossing of threshold or alarm state).
	 Configuration error	An inconsistency has been detected in the configuration of the variable.
	 Unrefreshed	<p>The variable was not refreshed during the previous cycle.</p> <p>This state may be permanent if the the system is physically saturated (too many variables with higher priority, i.e. acquisition periods that are too short in relation to the total number of variables). The problem can be eliminated by entering only an acquisition period if necessary; if this is not sufficient the remaining periods must be adjusted.</p> <p>This state may only be temporary if the variable belongs to a "slow" peripheral.</p>
	 Variable referenced in at least one formula	To view all the formulae referencing this variable, just click on the link associated with this pictogram.
	 Control by formula disabled	Allows the variable to be changed to manual control; stopping of automatic control to force a value or carry out operating tests.
	 Formula compilation error	The formula is incorrect (syntax, incorrect reference, etc).
	 Formula execution error	The formula is correct, but an error occurred during its execution (illegal calculation, etc).
	 State "Straton" variable	This variable is used by the Straton application during execution.
Description	Provides an extended description. Enter a specific phrase describing the nature and content of the variable. The description must be understandable by all the system's operators (31 characters maximum).	
Peripheral	<p>Indicates the peripheral on which the variable will be read and/or written. The list contains the peripherals configured in the previous chapter.</p> <p>Special peripherals:</p> <ul style="list-style-type: none"> ■ virtual peripheral: the variable is not physically read from a peripheral. Instead its value is calculated via a calculation formula. ■ system peripheral: the value of the variable is provided through system data from Xflow. This data is not physically read from a peripheral but corresponds to information internal to Xflow software (very rarely necessary). 	

Schneider Electric Industries SAS

35, rue Joseph Monier
CS 30323
F- 92506 Rueil Malmaison Cedex

RCS Nanterre 954 503 439
Capital social 896 313 776 €
www.schneider-electric.com

As standards, specifications and designs change from time to time, please ask for confirmation of the information given in this publication.



This document has been printed on ecological paper

Design: Schneider Electric
Photos: Schneider Electric
Printed: